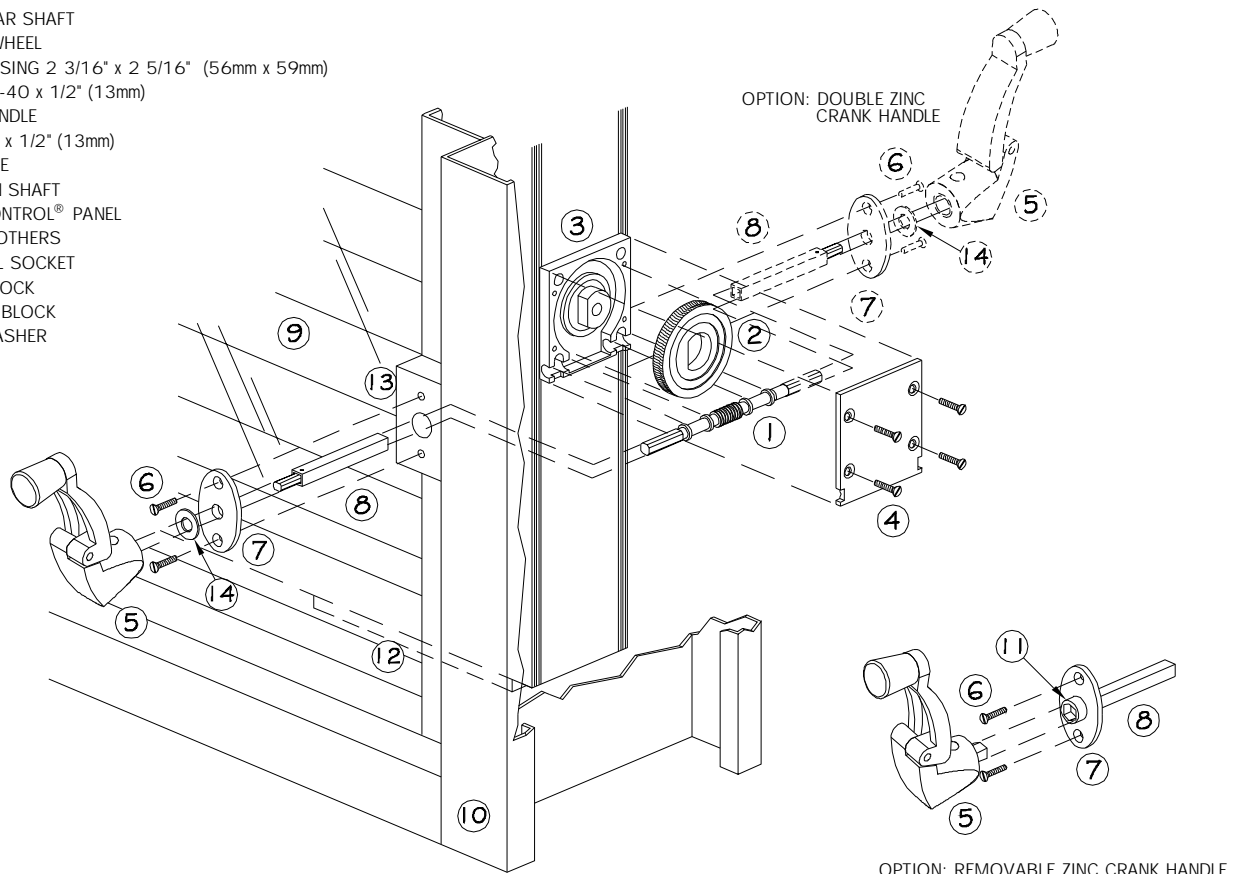


- 1- WORM GEAR SHAFT
- 2- GEARING WHEEL
- 3- GEAR HOUSING 2 3/16" x 2 5/16" (56mm x 59mm)
- 4- SCREW #5-40 x 1/2" (13mm)
- 5- CRANK HANDLE
- 6- SCREW #6 x 1/2" (13mm)
- 7- OVAL PLATE
- 8- EXTENSION SHAFT
- 9- VISION CONTROL® PANEL
- 10- FRAME BY OTHERS
- 11- HEXAGONAL SOCKET
- 12- SETTING BLOCK
- 13- ALUMINUM BLOCK
- 14- PLASTIC WASHER



INSTALLATION INSTRUCTIONS

- A- Install stainless steel worm gear shaft ① into the cavity provided for it in the gear housing ③. To insert the worm gear in position, center the worm gear with the white gearing wheel ② and press firmly with a light rotation movement.
- B- Make sure that the gear housing is free of dirt. Screw the plastic cover in place. Do not use excessive torque on screws ④ in securing the plastic cover.
- C- Drill a 5/8" diameter hole (behind ⑬) in glass stop at the appropriate position (for the worm gear shaft ① according to Unicel's approved shop drawings).
- D- Install setting blocks ⑫ under the metal plates glued to the unit. Make sure they are sufficiently rigid to secure glass panel into its permanent position.
- E- Install the Vision Control® panel ⑨ in the opening which must be level, plumb, square and in plane. Make sure the worm gear shaft ① is centered in the 5/8" hole drilled in step C.
- F- Where necessary, install aluminum supporting block ⑬ by securing with screws.
- G- Screw the oval plate ⑦ coming with the plastic washer ⑭ the crank ⑤ and shaft extension ⑧ into the the frame with screws ⑥.
- H- Tighten the set screw of the crank handle ⑤ if loose.